

EFS VALVES[®]



THE VALVE SPECIALIST



Fluid control division of



EFS VALVES®



Fluid solutions for industry

EFSVALVES is a modern company with international focus aimed to satisfy your needs regarding control engineering and fluid regulation.

Since our origin we have always been at the cutting edge of technology applied to this field.

The company is ISO 9001, ISO 14001 and ISO 18001 - certified for design, manufacturing and marketing.

EFS has a Project Department for offers with the following abilities:

- Project management
- Project follow-up
- Calculations
- Commissioning
- Logistics



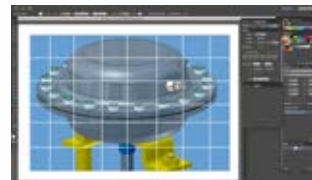
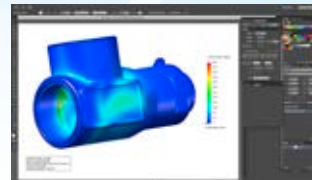
Project study and development.



Design and engineering.



Broad training of technical staff.



EFS PROJECTS

Nowadays, thanks to progress in technology, materials, design, communications, etc, we can satisfy demands that were previously not treated correctly.

Due to the need to count on a more complete service, within a more competitive environment, we have increased our offer in the added services area, improving continuously and adding real value to share it with our expertise managing projects worldwide.

The EFSVALVES project division manages efficiently each enquiry, develops projects and economic offers, where all important items are assessed: design, engineering, deviations, quality plans, timing, inspections, paperwork and logistic management. Without any doubt, this constitutes the best support and gives a professional status to the request management of the 21st century industry.

At the same time, we continue to reinforce efficiency and effectiveness throughout our organization, including a greater outsourcing degree, with a wide range of strategic suppliers with company values, in line with our philosophy, to complete our offer for valves and services.



On-time project management.



Project development and paperwork management.



Technical inspection.



Highly specialised equipment.



Accurate monitoring during manufacturing.

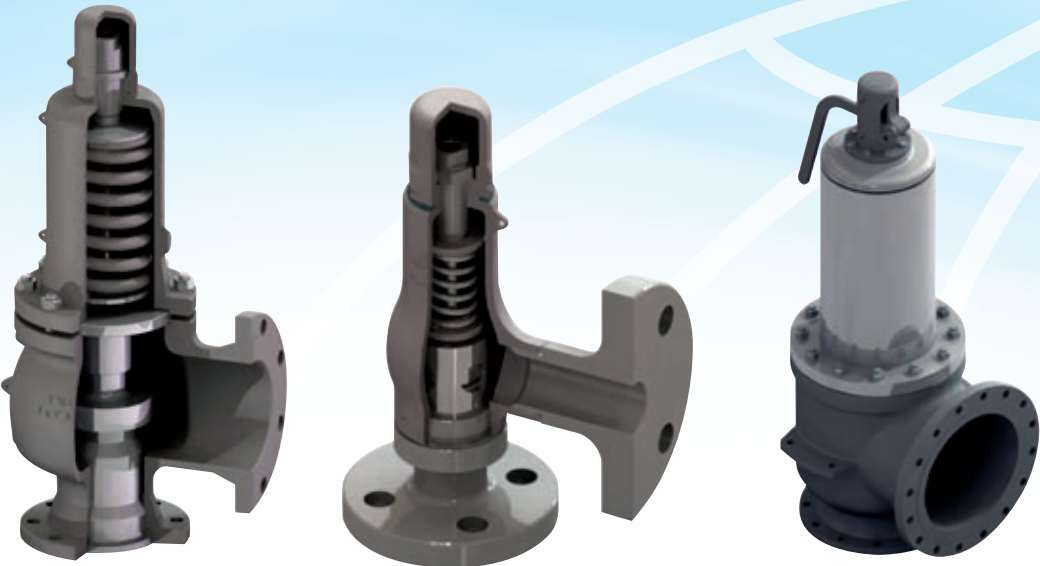


Cutting-edge metrology in quality control.



CNC machining.

Safety relief valves



Safety valves Accessories



Silencer for safety relief valves.

Materials:

DN	15 x 15	400 x 500
NPS	1/2" x 3/4"	16" x 20"
ORIFICES	"C " - "X" [API-ASME]	13 - 304 EN
T [°C]	-196	550
RATING EN	PN 16/16	PN 160/16
RATING ANSI	150#/150#	2500#/300#
ENDS	RF - RTJ - SW - BW - BSP - NPT - CLAMP	
BODY MATERIAL	A216WCB - A217WC6 - A351CF8 - A351CF3M - 2205 SS	
SPRING	17/7PH - C.ST - AISI 302 - Inconell X-750	
DESIGN	Conventional - Balanced - Pilot - Conterweight	
ACCESORIES	Gastight - Lifting lever - Packed lever	
DESIGN CODE	ASME - API	EN



EFS VALVES®

Vacuum & relief valves

Pressure reducing valves



Materials:

DN	50	300
NPS	2"	12"
PRESSURE SET	22 - 10.000 mmH2O	
VACUUM SET	22 - 8.400 mmH2O	
T [°C]	-20	250
RATING EN	PN 10	
RATING ANSI	150#	
ENDS	RF	
BODY MAT	A216WCB - A351CF8 -	
ACTION	Spring loaded - weight loaded	



Materials:

DN	10	150
NPS	3/8"	6"
P [Barg]	P1 max 40 / P2 max 20	
T [°C]	250	
RATING EN	PN 16 - 25 - 40	
RATING ANSI	150# - 300#	
Kv	32 - 240	
ENDS	RF - BSP - NPT	
BODY MAT	GGG40.3 / RG 10 / GSC -25-A 216 WCB - CF8M	
DIAPHRAGM	Reinforced Nitrile - Neoprene - EPDM	
DESIGN	Direct Action	Pilot
ACCESORIES	Gauges, siphon tube, neddle valves	



Pressure reducing valves

Control valves



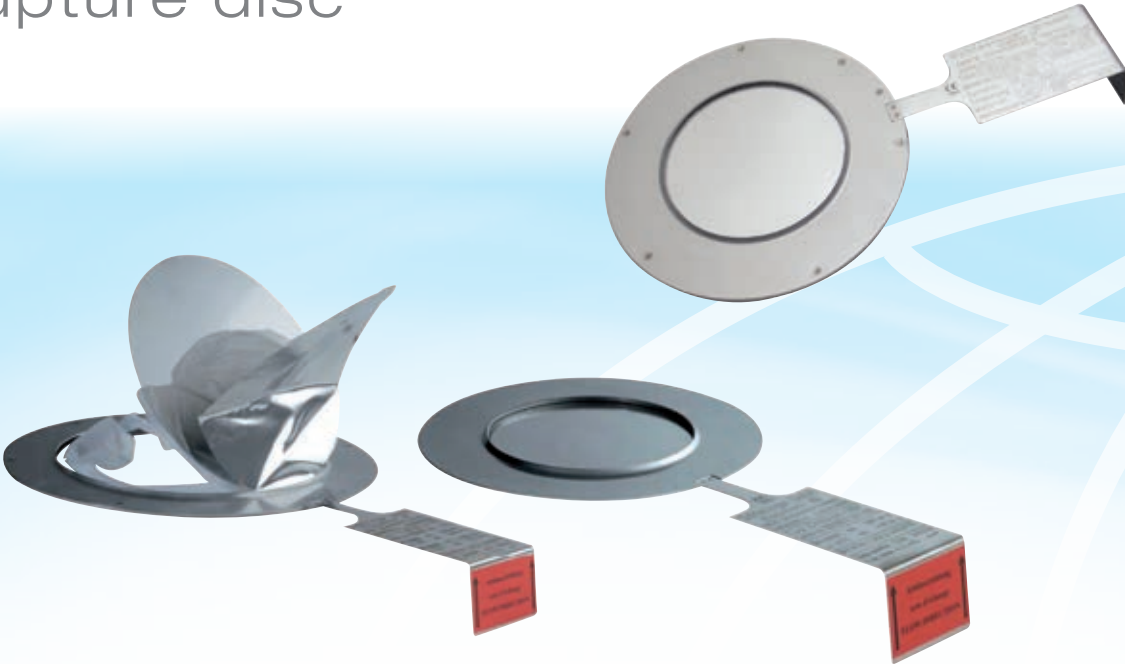
Materials:

DN	10	150
NPS	3/8"	6"
P [Barg]	P1 max 40 / P2 max 20	
T [°C]	250	
RATING EN	PN 16 - 25 - 40	
RATING ANSI	150# - 300#	
Kv	32 - 240	
ENDS	RF - BSP - NPT	
BODY MAT	GGG40.3 / RG 10 / GSC -25-A 216 WCB - CF8M	
DIAPHRAGM	Reinforced Nitrile - Neoprene - EPDM	
DESIGN	Direct Action	Pilot
ACCESORIES	Gauges, siphon tube, neddle valves	

Materials:

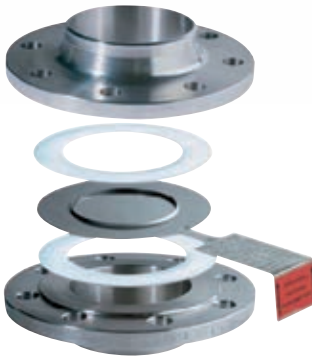
DN	15	200
NPS	1/2"	8"
P [Barg]	P1 max 25 / P2 max 20	
T [°C]	250	
RATING EN	PN 16/25	
RATING ANSI	300# / 300#	
Kv	3,8 - 240	
ENDS	RF	
BODY MAT	GGG40.3 / RG 10 / GSC -25-A 216 WCB - CF8M	
ACTUATOR cm²	390 - 80	
TYPE	Pneumatic - Electropneumatic -Electric	
DESIGN	2 ways modulated	
ACCESORIES	Positioner, switched	

Rupture disc



Materials:

DN	25	800
NPS	1"	32"
TOLLERANCE	5%	10%
T [°C]	-80	200
RATING EN	PN 6	PN 250
RATING ANSI	150#	3000#
ENDS	Wafer	Holders
BODY MAT	SS.ST - NICKEL - MONEL® - INCONEL® - HASTELLOY®	
FEAUTURES	Uni-Biderocional	Vacuum resistant
ACCESORIES	Detectors, holders	



Valve service center

Our offer adjustment to the customer's needs implies the ability to provide a service so that our products continue to create the same value during all their useful life as the first day.

Therefore, we have developed a post-sales technical support service to give value to the product by offering the following:

- training for the basic service
- diagnosis service
- Repair and tuning service
- Quality plan for our repairs
- Repairs with survey by third parties with the most renowned organizations



EFSS VALVES®

THE VALVE SPECIALIST



C/ Galileo, 8 - Polígono Industrial Can Estella
08635 St. Esteve Sesrovires - Barcelona - Spain
Tel.: +34 902 889 438 - Fax: +34 902 889 439

info@efssvalves.com
www.efssvalves.com



Fluid control division of

